

APX-103

STANDARD SPECIFICATIONS

Workpiece	Objects of grinding	Periphery and both side K-Land of standard insert (Standard and small diameter) Both side K-land can be ground by 180 degrees reversal of insert with robot. (Reversed positive K-land is not possible)
	Material	Carbide, Cermet, Ceramics, CBN, PCD
	Minimum inscribed circle	Equilateral Triangle: 3.5 mm Others: 4.7 mm
	Maximum circumscribed circle	45 mm
	Maximum thickness	15 mm
X axis (In-feed)	Maximum rapid feed rate	10 m/min
Y axis (Oscillation)	Maximum rapid feed rate	30 m/min
B axis (Insert rotation)	Travel	∞
	Maximum rapid feed rate	100 min ⁻¹
C axis (Swiveling table)	Grinding range	-90~+36 deg. (Some limitations depending on the conditions.)
	Maximum rapid feed rate	9,000°/min
Spindle	Grinding wheel size	Outside diameter φ350 mm
	Spindle rotation speed	500~2,000 min ⁻¹
	Motor	7.5 kW
Tail stock	Maximum chuck pressure	10 kN (Theoretical value at the time of 7MPa.)
Dressing device	Diameter of dressing wheel	Outside diameter φ100 mm
	Wheel rotation speed	300~1,500 min ⁻¹
Centering pin device		Exchanging system
Automatic centering device	Control system	Back/forward, up/down automatic control
Measuring device	Measuring probe	Flat type carbide probe φ7
Loading unloading device	Robot	SCARA robot
	Robot hand	Loading hand, unloading hand each 1 set, insert pusher
Work stock	Pallet type / No. of pallet (vertical)	Standard pallet (240 mm x 300 mm) : 3 pallets T-type pallet (190 mm x 370 mm) : 4 pallets
Touch panel		5.7 inch handy type
Oil cooling unit	Cooling part	Y axis linear motor and grinding wheel spindle

OPTION

Thickness measuring device		
AE Sensor		
In-process cleaning device	Cleaning wheel size	Outside diameter φ150 mm
	Wheel speed	300~1,500 min ⁻¹
Washing device		
Mist collector		
Workpiece for lay down pallet specification		Magnetic specification Vacuum suction specification
Camera for lay down pallet		For lay down pallet Work position / phase
Pallet changer	No. of pallet	10 pallets
Splash gun / Air gun		
Grinding fluid supply device		Tank capacity: 300 ℓ
Oil grinding specification	Automatic fire extinguisher	
	Coolant temperature controller	
	Oil flow sensor	
Measuring device (for large diameter workpiece)		
Air blow for measuring		

NC STANDARD SPECIFICATION

NC Unit	FANUC Series 31i-MODEL B
Control Axis	X axis (In-feed) Y axis (Oscillation) B axis (Insert rotation) C axis (Swiveling table)
Maximum Simultaneous Control Axis	4 axes

DRIVE SOURCE

Total Electric Capacity	10 kVA AC200 V (50/60 Hz)
Compressed Air Primary Pressure	0.35 MPa or More
Air Consumption	450 Nℓ/min
Hydraulic Unit Maximum Pressure	7 MPa

MACHINE SIZE

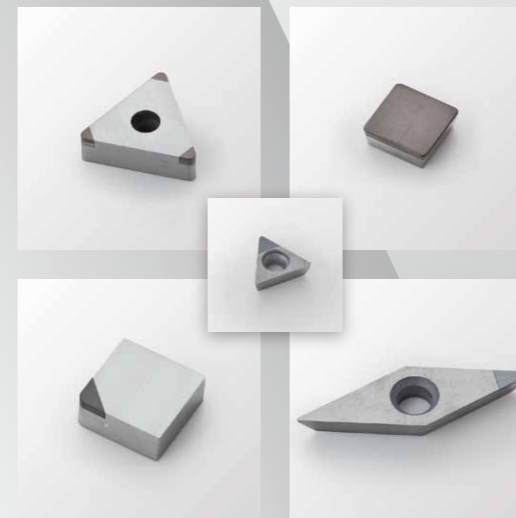
W×D×H	2,635×2,015×2,375 mm
Machine weight	5,500 kg

JIGS OPTION

Grinding wheel	
Dressing wheel	
In-process cleaning wheel	
Driving arbor	
Clamping arbor	
Centering block	
Robot finger	
Centering pin	
Work guide	

Caution

- * This product may be regulated by the Foreign Exchange and Foreign Trade Control Law. Be sure to consult us before exporting the product to a foreign country.
- * Specifications in this catalog may be changed without notice due to improvement of the product, etc.



Fully Automatic Insert Periphery Grinder

APX-103


WAIDA MFG. CO., LTD

Head Office and Factory

Gifu Factory

Tokyo Branch Office

Chubu Office

Osaka Office

Shanghai Representative Office

JAPAN E.M. CO., LTD.

WAIDA FEELER PRECISION
MACHINERY CO., LTD.

2121, Katano-machi, Takayama City, Gifu 506-0824 Japan

191, Kinzoku Danchi, Kakamigahara City, Gifu 504-0957 Japan

3F Shinbashi NKK Bldg., 18-2, 2 Chome, Minato-ku, Tokyo 105-0003 Japan

191, Kinzoku Danchi, Kakamigahara City, Gifu, 504-0957 Japan

7F, 11-21, Nishi Nakajima 4-Chome, Yodogawa-ku, Osaka 5320011 Japan

Rm 1015, Zhongchuang Bldg., 819 West Nanjing Road, Shanghai 200041 China

300-1, Toyooka-cho, Kita-ku, Hamamatsu City, Shizuoka 4338103 Japan

3F., NO.133, Gongyequ 1st Rd., Xitun Dist., Taichung City 40755, Taiwan (ROC)

TEL +81-577-32-0390

TEL +81-58-382-3218

TEL +81-3-3459-4100

TEL +81-58-382-2911

TEL +81-6-6305-6461

TEL +86-21-6255-6035

TEL +81-53-523-6711

TEL +886-4-23594075

FAX +81-577-37-0020

FAX +81-58-380-0030

FAX +81-3-3459-4101

FAX +81-58-389-4409

FAX +81-6-6307-2338

FAX +86-21-6215-1389

FAX +81-53-523-6712

FAX +886-4-23509822

Insert Periphery Grinder for Throw Away Insert, Achieved High-Productivity and High-Quality

Fully Automatic Insert Periphery Grinder

APX-103

MAIN FEATURES

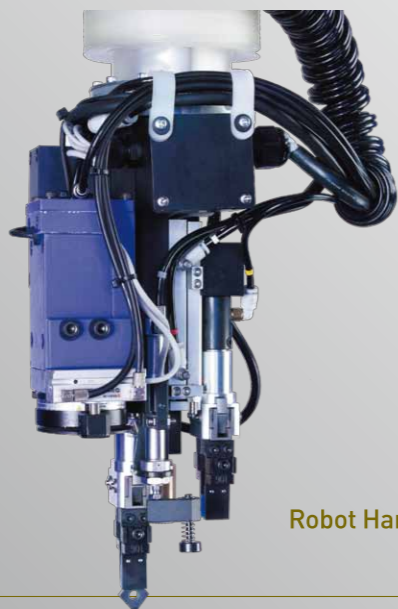
Product measurement



Work head



Loading unloading device



Robot Hand

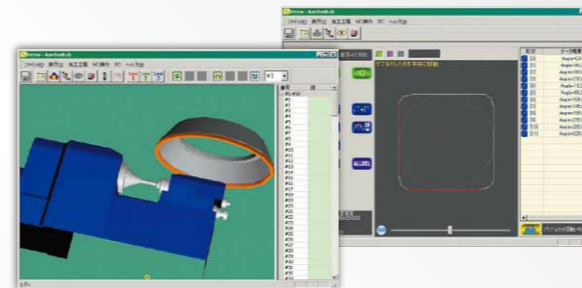
- 1** Peripheral grinding and two side K-Land grinding for standard throw away insert.
K-Land grinding with using one side of the wheel, two side K-Land is done by re-clamping workpiece.
- 2** New-developed work head with enhanced rigidity increases the B axis torque.
The same rigidity structure is also adopted in C axis.
- 3** Automatic oil mist lubrication system for feeding unit on X axis (In-feed) and Y axis (Oscillation).
- 4** Main body and the loader unit are fully covered.
Partition and shutter are installed to prevent the intrusion of liquid mist to the drive unit.
- 5** Adopted SCARA robot for workpiece loading & unloading.
2 sets of pallet can be equipped.
Pallet changer (10 pallets) is available as option parts.
- 6** Operability has been increased by adopting FANUC for NC unit, installing new oscillation option and interactive software, APX ToolLab.

Dressing device



In-process cleaning device
Option

Operation panel



Jigs Option



Axis Structure

