

APX-101

STANDARD SPECIFICATIONS

Workpiece	Objects of grinding	Periphery part of indexable insert
	Material	Carbide, Cermet, Ceramics, CBN, PCD
	Minimum inscribed circle	Equilateral triangle: 3.5 mm Others: 4.7 mm
	Maximum circumscribed circle	45 mm
X axis (In-feed)	Maximum rapid feed rate	10 m/min
	Maximum thickness	15 mm
Y axis (Oscillation)	Maximum rapid feed rate	10 m/min
B axis (Insert rotation)	Travel	∞
	Maximum rapid feed rate	100 min ⁻¹
C axis (Swiveling table)	Grinding range	-45~+36 deg. (Some limitations depending on the conditions.)
	Maximum travel	-70~+36 deg.
	Maximum rapid feed rate	9,000°/min
Spindle	Grinding wheel size	Outside diameter φ350 mm
	Spindle rotation speed	500~2,000 min ⁻¹
	Motor	7.5 kW
Tail stock	Maximum chuck pressure	10 kN (Theoretical value at supplied pressure 7 MPa.)
	Dressing device	Diameter of dressing wheel Outside diameter φ100 mm Wheel rotation speed 300~1,500 min ⁻¹
Centering pin device		Exchanging system
Manual centering device	Adjusting system	Back/forward, up/down manual adjustment system
Measuring device	Measuring probe	Flat type carbide probe φ7
Loading/unloading device	Type	3 axis rectangular coordinate loader
	Control axis	X axis (Left & right), Y axis (Back & forward), Z axis (Pallet position change)
	Robot hand	Loading hand, unloading hand each 1 set, insert pusher
Work stock	Vertical pallet type : No. of pallet	Standard pallet (240 mm x 300 mm) : 3 pallets

OPTION

Work head for high clamping pressure (incompatible with K-land grinding)		
AE Sensor		
Thickness measuring device (incompatible with high clamping pressure work head)		
In-process cleaning device	Cleaning wheel size	Outside diameter φ150 mm
	Wheel speed	300~1,500 min ⁻¹
Splash gun / Air gun		
Air blow for measuring		
Mist collector		
Washing device		
Grinding fluid supply device		Tank capacity: 300 ℓ
Oil cooling unit for spindle	Cooling part	Grinding wheel spindle
Measuring device (for large diameter workpiece)		
Work stock	Pallet type (vertical) / No. of pallet	T-type pallet (190 mm x 370 mm) : 4 pallets
Oil grinding specification	Automatic fire extinguisher	
	Coolant temperature controller	
	Oil flow sensor	
Inverter controlled hydraulic unit		

SPECIAL OPTION FOR NC WITH PC

NC controller with PC		
Automatic centering device	Control system	Back/forward, up/down automatic control
Y axis incremental linear scale		
Work head for one side K-land grinding	Maximum travel on C axis	-90~+30 deg. (Some limitations depending on the conditions.)
Workpiece for lay down pallet specification		Electric hand rotation axis
		Magnetic specification
		Vacuum suction specification
Camera for lay down pallet		For lay down pallet Work position / phase

WAIDA WAIDA MFG. CO., LTD

Head Office and Factory

Gifu Factory

Tokyo Branch Office

Chubu Office

Osaka Office

Shanghai Representative Office

JAPAN E.M. CO., LTD.

WAIDA FEELER PRECISION

MACHINERY CO., LTD.

2121, Katano-machi, Takayama City, Gifu 506-0824 Japan

191, Kinzoku Danchi, Kakamigahara City, Gifu 504-0957 Japan

3F Shinbashi NKK Bldg., 18-2, 2 Chome, Minato-ku, Tokyo 105-0003 Japan

191, Kinzoku Danchi, Kakamigahara City, Gifu, 504-0957 Japan

7F, 11-21, Nishi Nakajima 4-Chome, Yodogawa-ku, Osaka 5320011 Japan

Rm 1015, Zhongchuang Bldg., 819 West Nanjing Road, Shanghai 200041 China

300-1, Toyooka-cho, Kita-ku, Hamamatsu City, Shizuoka 4338103 Japan

3F., NO.133, Gongyequ 1st Rd., Xitun Dist., Taichung City 40755, Taiwan (ROC)

TEL +81-577-32-0390

TEL +81-58-382-3218

TEL +81-3-3459-4100

TEL +81-58-382-2911

TEL +81-6-6305-6461

TEL +86-21-6255-6035

TEL +81-53-523-6711

TEL +886-4-23594075

FAX +81-577-37-0020

FAX +81-58-380-0030

FAX +81-3-3459-4101

FAX +81-58-389-4409

FAX +81-6-6307-2338

FAX +86-21-6215-1389

FAX +81-53-523-6712

FAX +886-4-23509822

NC STANDARD SPECIFICATIONS

NC Unit (without PC)	FANUC Series 31i-MODEL B
Control Axis	X axis (In-feed)
	Y axis (Oscillation)
	B axis (Insert rotation)
	C axis (Swiveling table)
Maximum Simultaneous Control Axis	4 axes

DRIVE SOURCE

Total Electric Capacity	10 kVA AC200 V (50/60 Hz)
Compressed Air Primary Pressure	0.35 MPa or More
Air Consumption	450 Nℓ/min
Hydraulic Unit Maximum Pressure	7 MPa

MACHINE SIZE

W×D×H	2,575×2,330×2,160 mm
Machine weight	5,500 kg

JIGS OPTION

Grinding wheel	
Dressing wheel	
In-process cleaning wheel	
Driving arbor	
Clamping arbor	
Centering block	
Robot finger	
Centering pin	
Pallet	
Work guide for lay down pallet specification	

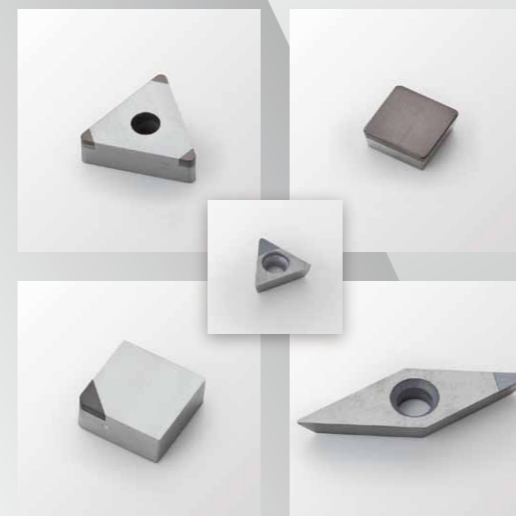
Caution

- * This product may be regulated by the Foreign Exchange and Foreign Trade Control Law. Be sure to consult us before exporting the product to a foreign country.
- * Specifications in this catalog may be changed without notice due to improvement of the product, etc.

WAIDA

Fully Automatic
Insert Periphery Grinder

APX-101



Global standard machine with various options for your requirements

APX-101

MAIN FEATURES

Product measurement



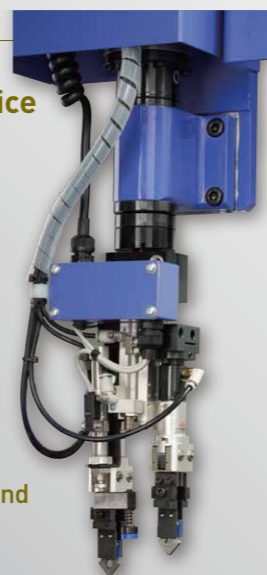
Work head for high clamping pressure

Option



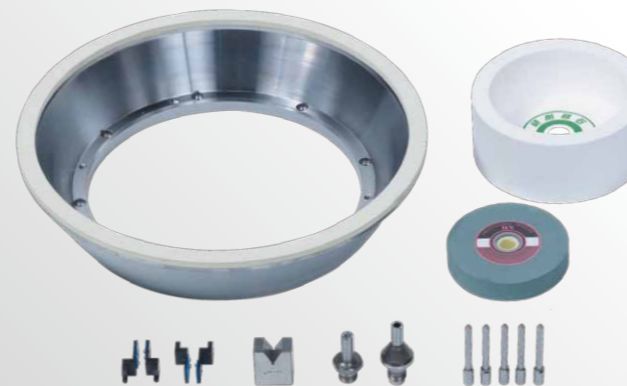
Loading unloading device

Robot hand



Jigs

Option



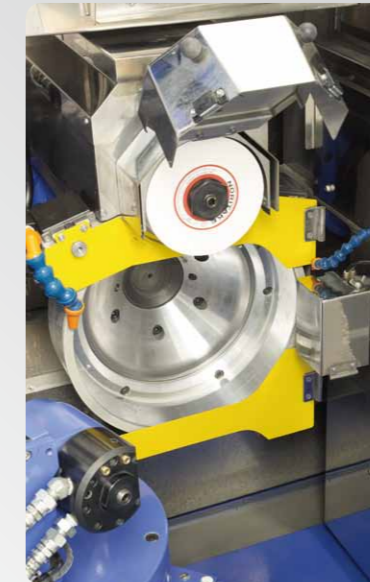
- 1 Peripheral and one side K-land (option) grinding for standard throw away insert.
- 2 Work head is selectable from "Standard work head", "Work head for high clamping pressure", and "Work head for one side K-land grinding" as option.
- 3 Interactive software, APX ToolLab, is standard specification.
- 4 Adopted 3 axis rectangular coordinate loader for loading & unloading, 3 standard type pallet (vertical type) can be equipped.
- 5 Main body and the loader unit are fully covered. Partition and shutter are installed to prevent the intrusion of liquid mist to the drive unit.
- 6 Automatic oil mist lubrication system for feeding unit on X axis (In-feed) and Y axis (Oscillation).

Dressing device



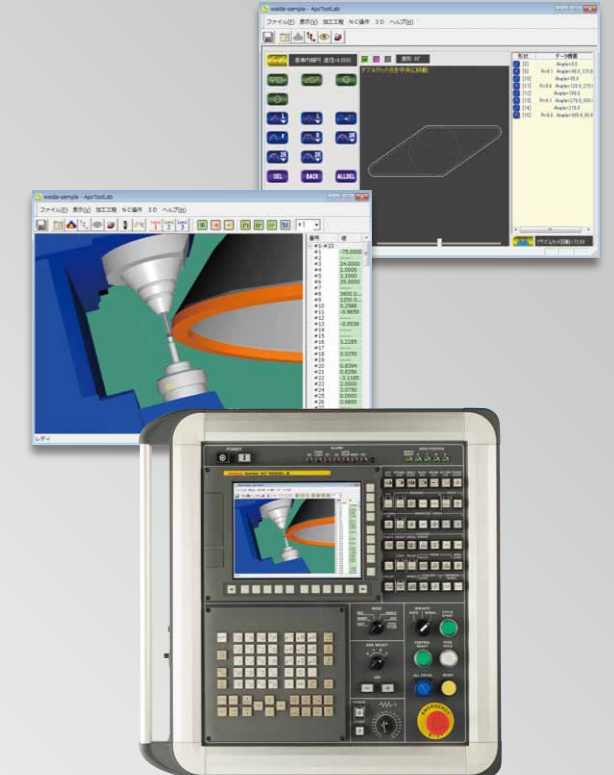
In-process cleaning device

Option

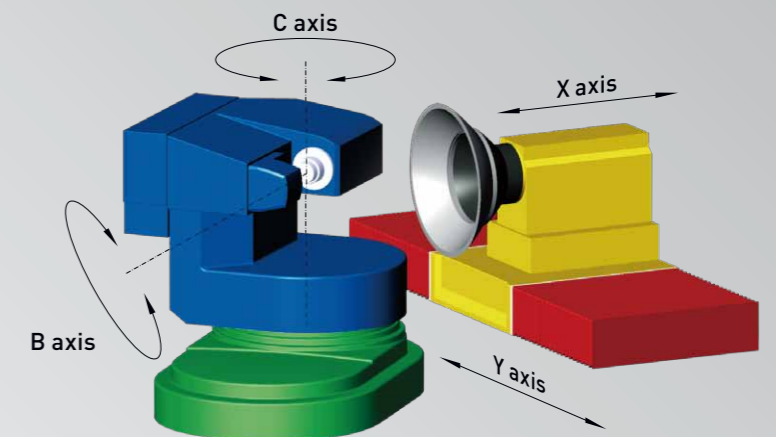


Operation panel special software

Option



Axis Structure



X axis (In-feed)
Y axis (Oscillation)
B axis (Insert rotation)
C axis (Swiveling table)